



Video Modeling and Video Instruction A Power Tool for Learning and Showing!

Wisconsin Self Determination Conference
Kalahari Resort – Wisconsin Dells
October 15-16, 2019



ELIZABETH DELSANDRO is a Clinical Professor in the University of Wisconsin's Department of Communication Sciences and Disorders. Previously, she was the senior clinical speech-language pathologist at the Waisman Center of the University of Wisconsin-Madison, working in a variety of clinics. You can reach Elizabeth at Delsandro@wisc.edu.

PATTI BECKER continues to influence the diverse fabric of self-direction in long-term care. Her experiences include provider roles of direct support and management; consultant roles with families, advocates, and funding agencies, as well as advocacy in local, state and federal venues. She is currently Manager of Community Partnership at TMG. You can reach Patti at PBecker@tmgwisconsin.com.

ABIGAIL TESSMANN is a disability advocate living a diverse and self-determined life. Abigail has worked as a bus trainer through the Cutting Edge program and has started her own business helping others with transit training. Abigail also has a passion for vocal arts and creating healthy dishes. You can reach Abigail at Transit2Go@Outlook.com.

Who is TMG?



Leader in community-based long term supports, quality management and service design for 30+ years.

- IRIS Consultant Agency (ICA) since 2008, partnering with over 15,000 people.
- Self-Directed Personal Care (SDPC) Oversight Agency supporting over 8,000 individuals who have chosen SDPC.
- Quality oversight for community-based services since 1986.
- Health and human services system analysis, design and training.

Locally-based operations with over 600 staff in communities throughout Wisconsin.

Let's clear the path ahead.

Magellan HEALTH[®]

[One company, two
unique platforms]
A Fortune 500 company

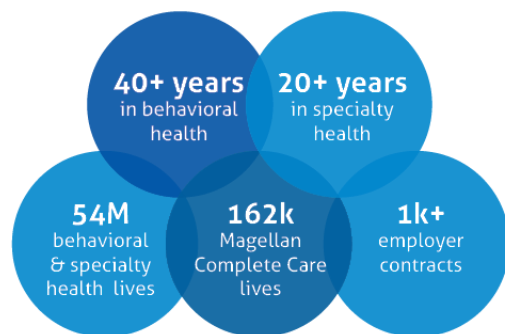


Offices in 26 states & D.C.



10,500 Total Employees

Magellan HEALTHCARE[®]



Improving Outcomes for Complex Populations

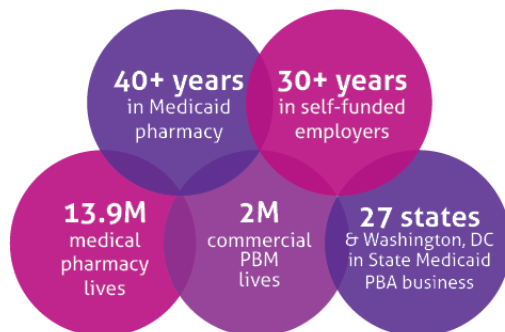
Customers:

- Employers
- Health plans
- Provider groups
- State governments
- Federal government

Solutions:

- Behavioral health
- Specialty medical
- Employee assistance programs
- Full-service specialty health plans
- Complex populations

Magellan Rx MANAGEMENTSM



Solving Complex Pharmacy Challenges

Customers:

- Employers
- Managed care organizations
- Unions
- State & local governments
- Medicare & Medicaid

Solutions:

- Core PBM capabilities
- Targeted clinical programs
- Traditional & specialty drug management
- Insights & analytics
- Member engagement programs

What Are We Going To Do?



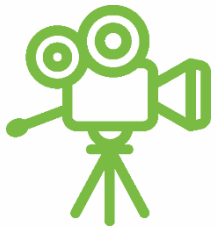
WISCONSIN'S TOP-RATED
IRIS CONSULTANT AGENCY



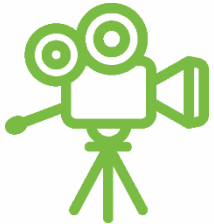
WAISMAN CENTER
UNIVERSITY OF WISCONSIN-MADISON
University Center for Excellence in Developmental Disabilities



Learn about video modeling.



Learn tips and tricks to make videos.

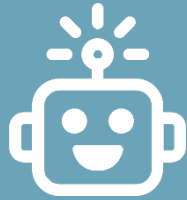


Practice making a video.



Let's clear the path ahead.

Why Can Video Modeling Be Awesome?



Video modeling **uses technology!** (and technology can be fun and useful!



Video models can be **watched over and over!**



Video models or videos can be **simple to make!**



Video models can **show others your awesomeness!**

Kinds of Video Modeling

tmg[®]
Let's clear the path ahead.

WISCONSIN'S TOP-RATED
IRIS CONSULTANT AGENCY



WAISMAN CENTER
UNIVERSITY OF WISCONSIN-MADISON
University Center for Excellence in Developmental Disabilities

Video Modeling:

It can be a video of other people that you watch to learn how to do something!



Kinds of Video Modeling

tmg[®]
Let's clear the path ahead.

WISCONSIN'S TOP-RATED
IRIS CONSULTANT AGENCY



WAISMAN CENTER
UNIVERSITY OF WISCONSIN-MADISON
University Center for Excellence in Developmental Disabilities

Self Modeling:

It can be a video of you doing great things to show others, or sharing something with others!



Video Modeling and Self-Determination



WISCONSIN'S TOP-RATED
IRIS CONSULTANT AGENCY



WAISMAN CENTER
UNIVERSITY OF WISCONSIN-MADISON
University Center for Excellence in Developmental Disabilities

5 REASONS VIDEO MODELING IS HELPFUL:

1. It puts the person in control.

2. It's a tool to share your knowledge and empower others.

3. It supports learning together in our communities.

4. It's a fast way to connect.

5. It's FUN!!!

Let's clear the path ahead.

Do You:

tmg[®]
Let's clear the path ahead.

WISCONSIN'S TOP-RATED
IRIS CONSULTANT AGENCY



WAISMAN CENTER
UNIVERSITY OF WISCONSIN-MADISON
University Center for Excellence in Developmental Disabilities

Have things you want to learn how to do in your job?

Have things you want to learn how to do in your free time?

Have things you want to learn how to do to live more independently?

Have skills or things that you do well that you want to show others?

Have times when you want to teach others how to do something?

If So...

tmg[®]
Let's clear the path ahead.

WISCONSIN'S TOP-RATED
IRIS CONSULTANT AGENCY



WAISMAN CENTER
UNIVERSITY OF WISCONSIN-MADISON
University Center for Excellence in Developmental Disabilities

The background of the slide features a blue-toned image of a film strip. A dark silhouette of a movie camera is positioned on the left side of the strip. One of the frames in the strip shows a close-up of a waterfall. The overall aesthetic is cinematic and professional.

Videos might
be a great
way to do it!

How Do I Apply This With Self-Directing My Life?

tmg[®]
Let's clear the path ahead.

WISCONSIN'S TOP-RATED
IRIS CONSULTANT AGENCY



WAISMAN CENTER
UNIVERSITY OF WISCONSIN-MADISON
University Center for Excellence in Developmental Disabilities



How Do I Apply This With Self-Directing My Life?



WISCONSIN'S TOP-RATED
IRIS CONSULTANT AGENCY



WAISMAN CENTER
UNIVERSITY OF WISCONSIN-MADISON
University Center for Excellence in Developmental Disabilities

You Could:

- Create training videos for your personal care workers
- Tired of your job coach? Use videos to remember how to do tasks at work.
- Tell a story about your family and where you grew up.
- Teach someone to bake your favorite cake.
- Or like Abby, learn to ride the bus!

Let's clear the path ahead.

Before You Get Started Making a Video:

tmg[®]
Let's clear the path ahead.

WISCONSIN'S TOP-RATED
IRIS CONSULTANT AGENCY



WAISMAN CENTER
UNIVERSITY OF WISCONSIN-MADISON
University Center for Excellence in Developmental Disabilities



Before You Get Started Making a Video:

tmg[®]
Let's clear the path ahead.

WISCONSIN'S TOP-RATED
IRIS CONSULTANT AGENCY



WAISMAN CENTER
UNIVERSITY OF WISCONSIN-MADISON
University Center for Excellence in Developmental Disabilities

1. **Think** about what you want to make a video about.
2. **Think** about what you are going to show in the video.
3. **Think** about where you are going to make your video.
4. **Think** about who might help you make the video.

Then **practice, practice, practice!**

Think of yourself as an **actor in a movie!** You have to practice your lines for the movie!

Group Activity

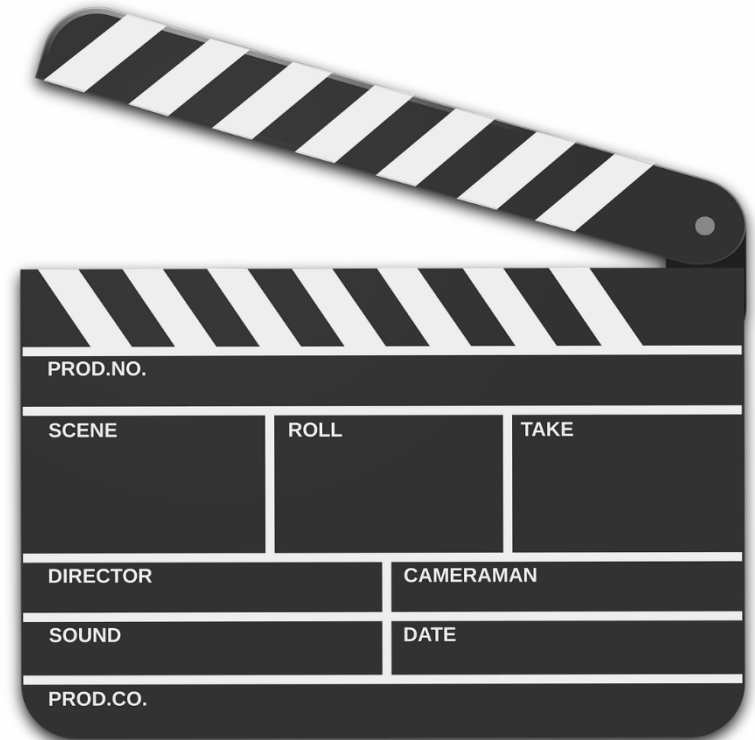


WISCONSIN'S TOP-RATED
IRIS CONSULTANT AGENCY



WAISMAN CENTER
UNIVERSITY OF WISCONSIN-MADISON
University Center for Excellence in Developmental Disabilities

1. Get into groups of 3 or 4 people.
2. Pick one activity to make a video.
3. Work together to figure out what you are going to do and say in your video.
4. Make a video with your phone or tablet.
5. Let's get back into our big group to talk about it!



Let's clear the path ahead.

Show, Tell and Ask



WISCONSIN'S TOP-RATED
IRIS CONSULTANT AGENCY



WAISMAN CENTER
UNIVERSITY OF WISCONSIN-MADISON
University Center for Excellence in Developmental Disabilities

Let's check it
out – show
videos & ask
questions!



That's a Wrap!

tmg[®]
Let's clear the path ahead.

WISCONSIN'S TOP-RATED
IRIS CONSULTANT AGENCY



WAISMAN CENTER
UNIVERSITY OF WISCONSIN-MADISON
University Center for Excellence in Developmental Disabilities

Would this be a
tool that you would
use in your future?





WISCONSIN'S TOP-RATED
IRIS CONSULTANT AGENCY



WAISMAN CENTER
UNIVERSITY OF WISCONSIN-MADISON
University Center for Excellence in Developmental Disabilities

Thanks!

Confidentiality Statement

By receipt of this presentation, each recipient agrees that the information contained herein will be kept confidential and that the information will not be photocopied, reproduced, or distributed to or disclosed to others at any time without the prior written consent of Magellan Health, Inc.

The information contained in this presentation is intended for educational purposes only and is not intended to define a standard of care or exclusive course of treatment, nor be a substitute for treatment.

The information contained in this presentation is intended for educational purposes only and should not be considered legal advice. Recipients are encouraged to obtain legal guidance from their own legal advisors.

Let's clear the path ahead.